










Effects of novel multicomponent exercise programs on brain-derived neurotrophic factor levels and physical fitness in older women

Mayara Imaizumi, MSc^a , Walter Sepulveda-Loyola, PhD^{b*} , Bruna Prado Gomes, MSc^a , Camila Pereira, PhD^a , Fabiana Cristina Scherer^a , Regina Célia Poli-Frederico, PhD^c , Andréa Name Colado Simão, PhD^d , Vanessa Suziane Probst, PhD^e , Denilson de Castro Teixeira, PhD^{a, e, f} 

^aAssociate Postgraduate Program in Physical Education, State University of Londrina, Londrina, Paraná, Brazil; ^bFaculty of Health and Social Sciences, Universidad de Las Americas, Santiago, Chile; ^cDepartment of Cell and Molecular Biology, University North of Paraná, Londrina, Paraná, Brazil; ^dDepartment of Pathology, Clinical Analysis and Toxicology, Laboratory of Research in Applied Immunology, Health Sciences Center, University Hospital, State University of Londrina, Londrina, Paraná, Brazil; ^ePostgraduate Program in Rehabilitation Sciences, State University of Londrina, Londrina, Paraná, Brazil; ^fDepartment of Physical Education and Sport, State University of Londrina, Londrina, Paraná, Brazil

ABSTRACT

INTRODUCTION Multicomponent exercise programs have demonstrated benefits for both cognitive and physical function. However, their effects on brain-derived neurotrophic factor (BDNF) levels remain inconsistent, particularly in protocols incorporating functional exercises. This study aimed to evaluate the impact of two distinct multicomponent exercise protocols on BDNF levels and physical fitness in older women.

METHODS Ninety physically active, community-dwelling older women (70.4 ± 7.2 years) were allocated to three different groups: 1) Multicomponent program 1: Circuit-based functional training; 2) Multicomponent program 2: Pilates Method; and 3) control group that received only health education. Both multicomponent programs were conducted over a 12-week period, with 50-minute sessions held three times per week. The control group participated in 12-week Health Education intervention with 90-minute sessions once a week. Brain-derived neurotrophic factor levels, short physical performance battery, agility, six-minute walk, and handgrip tests were measured.

RESULTS Brain-derived neurotrophic factor levels increased significantly in both the functional training group ($p < 0.001$) and Pilates group ($p = 0.005$), with a more pronounced increase observed in the functional training group. The distance covered in the six-minute walk test also increased significantly in the functional training group ($p = 0.001$) and was greater compared to both the Pilates ($p < 0.001$) and control ($p < 0.001$) groups.

CONCLUSIONS Both multicomponent exercise programs led to increased BDNF levels after 12-week intervention. However, functional training yielded superior results compared to the Pilates method, possibly mediated by improvement in physical function.

KEYWORDS Aging, Brain-Derived Neurotrophic Factor, Exercise

* Corresponding author wsepulveda@udla.cl

Citation Imaizumi M, Sepulveda-Loyola W, Prado Gomes B, Pereira C, Cristina Scherer F, Poli-Frederico RC, et al. Effects of novel multicomponent exercise programs on brain-derived neurotrophic factor levels and physical fitness in older women. Medwave 2025;25(04):e3010
DOI 10.5867/medwave.2025.04.3010

Submitted Sep 4, 2024, Accepted Mar 21, 2025,

Published May 8, 2025

Postal address Echaurren 140, Santiago Centro, Santiago, Chile

INTRODUCTION

Maintenance of fitness and cognitive functions has been identified as one of the main factors for healthy aging [1]. Exercise is known for reducing the deleterious effects of aging and maintaining and improving physical and cognitive function in older adults [2]. In this population, different types of physical exercise programs have shown improving in muscle strength, mobility, agility, gait speed, cardiorespiratory fitness and preserving cognitive [3–5]. Despite previous investigations into the effects of exercise programs on fitness and cognitive function, significant discrepancies

MAIN MESSAGES

- To date, no studies have investigated the effects of different multicomponent exercise programs on BDNF levels in older adults.
- Both functional training and Pilates significantly increased BDNF levels; however, functional training resulted in a more pronounced increase.
- The multicomponent exercise program that included functional activities led to significant improvements in physical function.

persist regarding the specific types of exercises, modalities, intensities, and whether incorporating functional tasks into exercise programs could yield additional benefits on physical and cognitive markers.

In the context of physical exercise and cognitive function, the brain-derived neurotrophic factor (BDNF), an important neurotrophin related to survival and plasticity of neurons, has been widely studied. Reductions in peripheral BDNF levels may be important biomarkers related to depression [6] and mild cognitive impairment (MCI) [7], the latter being considered a risk factor for Alzheimer's Disease. Recent evidence indicated that physical exercise stimulates metabolic pathways capable of regulating the expression of peripheral BDNF [8,9]. However, there are still divergences regarding the type of exercise program that presents the most promising results. For instance, Dinoff et al. [10] showed a significant increment of BDNF levels in aerobic interventions, but not in resistance training. On the other hand, a meta-analysis study showed that strength training and combined training (aerobic and strength) had a positive effect on peripheral BDNF concentrations in older adults, while isolated aerobic training did not induce the same response [11]. Most systematic reviews about the effect of physical exercise on BDNF in older population, have shown that most clinical trials have mainly evaluated the benefits of aerobic and/or strength training [11–14]. Only one systematic review [14] examined the effects of multicomponent exercise on BDNF levels, including three clinical trials with controversial results [15–17].

Multicomponent exercise programs are those in which aerobic and resistance training are combined with other physical abilities (e.g. balance, flexibility, motor coordination, etc.) including or not functional tasks. Functional exercise programs have emerged as a new modality of multicomponent exercise programs, emphasizing functional tasks tailored to various physical abilities [18]. In older adults, this modality has demonstrated benefits in cognitive and physical function, particularly when incorporating dual-task activities. Given that dual-task activities are commonly performed in the daily living, training in such activities could lead to functional improvement and stimulate cerebral areas associated with learning in older adults [19,20]. Although this exercise modality has been shown to improve the cognitive capacity of older adults [21–23], there is no evidence about the effect on BDNF levels. We hypothesized that multicomponent exercise protocols would result in significant increases in BDNF levels and physical fitness,

with more pronounced improvement observed in participants who engaged in functional exercises incorporating dual-task activities. Therefore, the present study analyzed the effects of two multicomponent exercise protocols on the level of BDNF and physical fitness in physically independent older women. One exercise protocol incorporated functional exercises with dual-task activities, while the other utilized multicomponent exercises based on pilates method.

METHODS

Study design

A non-randomized controlled trial registered on the Brazilian Registry of Clinical Trials platform (RBR-2HJJ7G/UTN: U1111-1254-3147). The study included a non-probabilistic or convenience sampling of 90 older women, recruited via social media, social networks and community health care centers from Londrina, Brazil. The Study was approved by the Ethics Committee from the State University of Londrina (UEL) (approval number: 2.788.802). The study followed the principles of the Declaration of Helsinki [24]. The study was conducted between August and November 2018.

Participants

The inclusion criteria were: (1) woman aged 60 years or more; (2) physically independent (capable of performing basic and instrumental activities of daily living without assistance); and (3) no participation in regular physical exercise programs during the last three months. The exclusion criteria comprised diseases and/or conditions that could interfere in the performance of the tests, such as neurological, vestibular, orthopedic, psychiatric, and decompensated respiratory or cardiac diseases. Initially, 166 volunteers signed up to participate, in which 90 met the eligibility criteria and were allocated in one of the groups, according to their proximity to the location where the program took place and the order of enrollment. Blinding of the physiotherapists involved in the treatment groups and the older adults was not possible, given the nature of the interventions. However, assessors involved in the assessment tests and the statistician were blinded to which group the subjects belonged. All participants read and signed an informed consent form.

Outcome measurements

To characterize the sample, sociodemographic data (age, education, and marital status) were collected using a

questionnaire developed specifically for this study. The economic level was measured using the procedures proposed by the Brazilian Association of Research Companies (ABEP) which estimates the purchasing power of families and classifies in accordance with the score that ranges from 0 to 100, with 100 being the highest economic level. Anthropometric variables were measured, such as body mass (kg), using a digital scale to the nearest 0.1 kg (Balmak. Class III model. São Paulo, Brazil), height (cm), using a stadiometer to the nearest 0.1 cm and body fat mass percentage and fat-free mass percentage, using bioelectrical impedance (Biodynamics 310TM, Biodynamics Corp. USA). From this information, the body mass index (BMI) was calculated using the ratio between body mass and the square of height.

Cognitive function was assessed using the Montreal Cognitive Assessment (MoCA), validated for the Brazilian population [25]. The MoCA is a simple and independent cognitive screening tool, which accesses different cognitive domains: visuospatial skills, executive functions, naming, memory, attention, abstraction, language, and orientation. The total score ranges from 0 to 30 points.

The Brazilian version of the Geriatric Depression Scale of Yesavage and Sheikh, reduced version, was used to assess depressive symptoms (GDS-15) [26]. The GDS-15 is composed of 15 questions with dichotomous answers (yes and no). The total score ranges from 0 (absence of depressive symptoms) to 15 points (maximum score for depressive symptoms).

To measure BDNF, 10 mL of venous blood were collected from each volunteer by a qualified professional from the local University Hospital. Collections were performed in the morning after an eight-hour fast and volunteers were asked not to exercise on the previous day. Blood samples were centrifuged at 3000 rpm for 10 min and the extracted plasma was stored at -80°C until use. BDNF levels were determined using microspheres multiplex immunofluorimetric assay (ProcartaPlex™ Multiplex Immunoassay, Thermo Fisher Scientific, Waltham, Maryland, USA) for Luminex platform (MAGPIX™, Luminex Corp., Austin, Texas, USA), and the procedures were performed according to the manufacturer's instructions and their reference values.

The physical fitness of lower limbs was assessed using the Short Physical Performance Battery, composed of three tests: a) standing balance test (side-by-side, semi-tandem, and full tandem positions); b) walking speed on 4-meters, and c) the chair stand. Each test was scored from 0 to 4 points, according to established performance criteria. The full Short Physical Performance Battery is scored from 0 to 12, in which zero indicates the worst physical function, and 12 is the highest level of physical function.

Agility assessment was performed using the battery protocol of the American Alliance for Health, Physical Education, Recreation & Dance, which consists of following a route as quickly as possible. The participant started the test sitting in a chair with armrests. On the command to start, they got up

and moved to the right around a cone, returning to the chair and sitting back down, then repeated the route to the left side and returned to sit in the chair. This circuit was consecutively performed twice, without interruption. Two attempts were performed and the shortest time in seconds obtained was considered into the analysis.

The six-minute walk test was performed to assess aerobic endurance, according to the norms of the American Thoracic Society. The test consists of walking as fast as possible (without running) on a hard, flat surface on a linear path 30 meters long, delimited by two cones, for six minutes. Standardized encouragement phrases were used to encourage older women to achieve their best results. Two attempts were performed at intervals of 30 minutes, and the longest distance covered in meters between the two attempts was considered in the analysis.

To measure the maximum isometric strength of the hand and forearm muscles, the handgrip test (HGT) was performed using a hydraulic dynamometer (Saehan®, SH5001, resolution 1 Kg). The test was performed in a sitting position with arms parallel to the trunk, elbows flexed to 90 degrees, and forearm and hand in a neutral position. At the evaluator's signal, the participant pressed the device as hard as possible for five seconds. Three measurements were taken in each hand, alternately, at one-minute intervals. For the analysis, the best result, independent of the side, was used. During all repetitions, the participants were encouraged to achieve their greatest strength.

Intervention protocols

The Functional Training and Pilates method were performed in the afternoon, three times a week, on alternate days, lasting approximately 50 minutes, totaling 36 sessions, and monitored by professionals and students of Physical Education and Physiotherapy. The Health Education group held one meeting a week of approximately 90 minutes, totaling 12 sessions, and was conducted by a previously trained physical education professional. The characteristics of each intervention modality are presented below.

Multicomponent program 1: circuit-based functional training

The functional training consisted of a functional exercise program with motor dual-task training using the Functional Exercise Circuit method [18]. Each session started with a 10-minute warm-up, with running, walking, stretching, and recreation exercises, followed by the Functional Exercise Circuit lasting about 30 minutes. The Functional Exercise Circuit consisted of aerobic, resistance, balance, and coordination exercises applied as functional tasks distributed in 15 stations (for details, see Loyola et al. [27]). Participants remained for one minute at each station and they had to complete the circuit twice. Before the beginning of the intervention, the maximum number of repetitions in one minute was calculated to control the exercise intensity. In the first week, the intensity of 50% of

the maximum number of repetitions was defined and gradually increased during the following weeks, reaching the value of 150% of the maximum number of repetitions in the 12th week. Balance exercise stations were not evaluated with repetitions, but by the level of difficulty, and the progression of these tasks was accomplished by reducing stability and increasing complexity (e.g. moving from two legs standing to one leg standing and/or the inclusion of dual tasks). At the end of each session, relaxation activities lasting about 10 minutes were performed.

Multicomponent program 2: Pilates method

The Pilates method involves strength, balance, and coordination exercises, following the principles of concentration, control, centering, fluidity, precision, and breathing. The intervention was developed in four cycles of nine classes, where each cycle progressed as follows: 1) familiarization with the Pilates method; 2) basic movements; 3) intermediate movements; and 4) advanced movements. Each session started with 10 minutes of stretching, followed by 10 minutes of strengthening exercises for each of the main body segments: lower limbs, trunk, and upper limbs (totaling 30 minutes), and ended with 10 minutes of stretching and relaxation. All exercises were performed in 1 set of 10 repetitions, with a 1-minute rest interval between exercises, using equipment such as Swiss balls, rubber bands, dumbbells, sticks, shin guards, and balance discs. The complexity of the exercises increased with each cycle and the intensity was controlled using the Borg rating of perceived exertion scale, modified by Foster et al. [28] maintained between 5 and 6 (heavy).

Both interventions were supervised by previously trained professionals and students of Physical Education and Physiotherapy.

Control group

The control group participated in a Health Education intervention, carried out through the Active Living Improving Health Program ("VAMOS") [29], whose goal is to motivate behavior change towards a healthy lifestyle in relation to physical activity and nutrition. At each meeting, one chapter of the specific booklet was discussed, made available free of charge to the participants. The subjects were related to physical activity, healthy eating, how to identify and overcome obstacles, planning and setting goals, and strategies to achieve and maintain positive changes. Although encouragement was given to change behavior, we have not offered a systematic practice of physical exercise to the participants in this group.

Statistical analysis

For data analysis, only participants who had a frequency $\geq 75\%$ in the interventions were considered. Descriptive data are presented as mean \pm standard deviation and 95% confidence intervals. A Generalized Estimating Equations model with link function and appropriate distribution assumptions

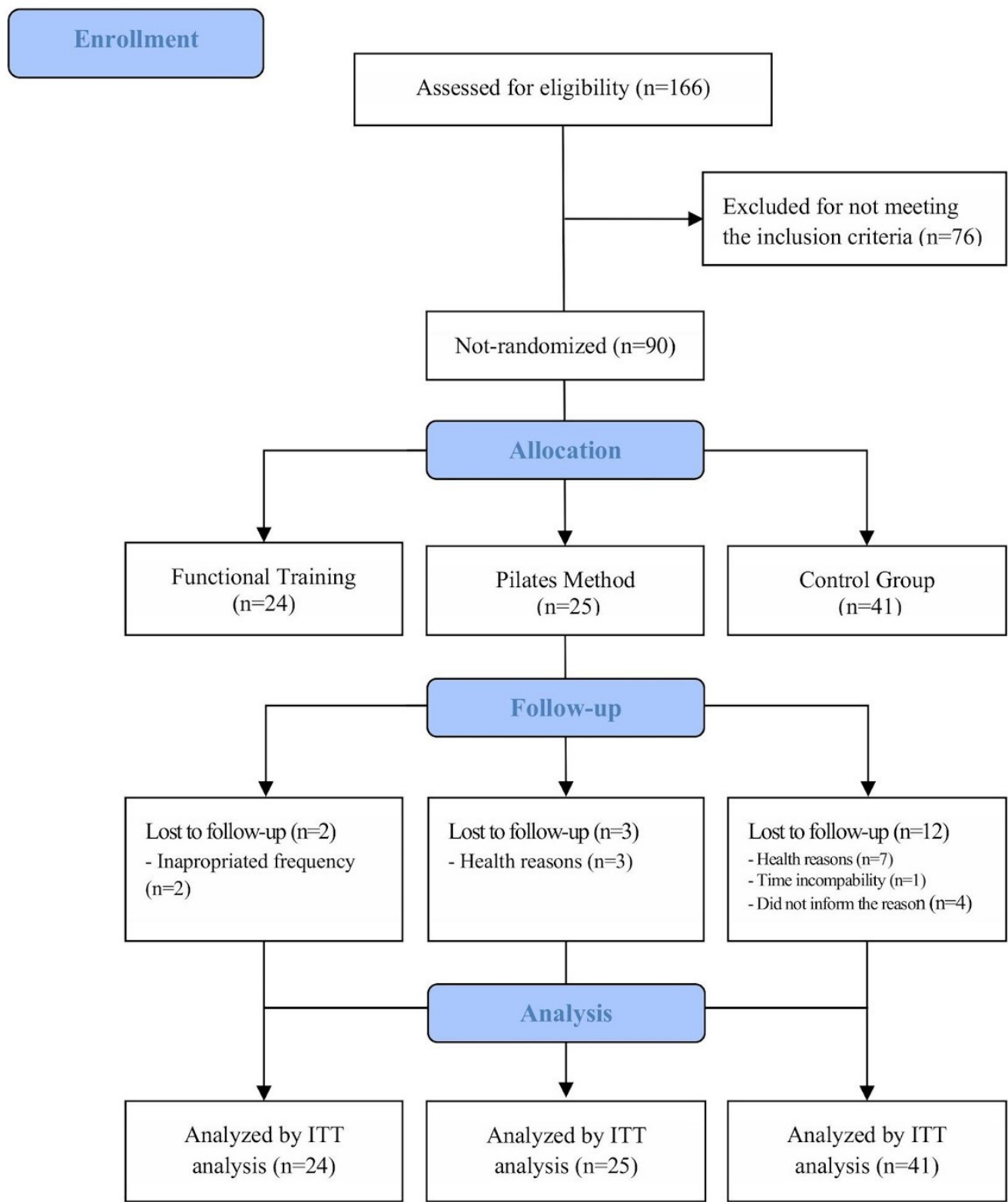
was used to compare the effect of the intervention between groups, controlled for age, BMI, years of education, depressive symptoms, and MoCA score. The model selected for each variable was based on the lowest value of the *Quasi-likelihood under the Independence Model Criterion – QIC*. The Generalized Estimating Equations was employed due to their robustness and appropriateness for longitudinal data analysis. Generalized Estimating Equations enables the use of different distributions according to the nature of the data, and it has been demonstrated that Generalized Estimating Equations can achieve greater statistical power in cases with small sample sizes and missing data [30]. The Bonferroni post-hoc was used for pairwise comparisons and Cohen's *d* [95% CI] for effect size, considering the effect to be trivial (<0.2), small (0.2 to 0.5), medium (0.5 to 0.8) or large (>0.8) [31]. In addition, the intention-to-treat approach was performed. Missing data in the dependent variable, identified as "missing not at random", were imputed using mean imputation based on observed values within each group. Analyses were performed using SSPS software (v. 25.0) and statistical significance was established at $p < 0.05$.

RESULTS

Of 90 older women who participated in the study (Functional training = 24; Pilates method = 25 and Control group = 41), 73 had a frequency $\geq 75\%$ in the interventions (Figure 1). The descriptive data of participants are shown in Table 1. There were no significant differences between groups regarding the baseline characteristics.

Table 2 summarizes the descriptive and comparative analyses of BDNF levels and physical fitness variables across the three groups, using three Generalized Estimating Equations analysis. Bonferroni post-hoc was used for pairwise comparisons and Cohen's *d* for effect size for Pre-post and post-post comparison. A significant group \times time interaction effect was detected for BDNF levels ($p = 0.001$) and the six-minute walk test ($p = 0.007$), indicating differential responses to the interventions. Significant increases in BDNF levels were observed following the exercise programs in both the functional training group ($p < 0.001$; Cohen's *d* = 0.884) and the Pilates group ($p = 0.001$; Cohen's *d* = 0.777). In contrast, the control group experienced a reduction in BDNF levels ($p = 0.025$; Cohen's *d* = -0.292). Regarding physical fitness outcomes, the distance covered in the six-minute walk test significantly increased exclusively in the functional training group ($p = 0.001$; Cohen's *d* = 0.491). The Short Physical Performance Battery scores improved in both the functional training group ($p = 0.001$; Cohen's *d* = 0.580) and the control group ($p = 0.001$; Cohen's *d* = 0.463). As a post hoc analysis, the distance covered in the six-minute walk test increased significantly in the functional training group compared to both the Pilates ($p < 0.001$; Cohen's *d* = -1.122) and control ($p < 0.001$; Cohen's *d* = -1.075) groups. As a post hoc analysis, the Short Physical Performance Battery score increased significantly in the functional training group compared to the Pilates ($p = 0.05$).

Figure 1. Flowchart sample distribution.



Source: Prepared by the authors based on the study results.

Table 1. Baseline characteristics of participants in each group.

	Funcrional training (n=24)	Pilates method (n=25)	Control group (n=41)	p
Age (years)	68.42 ± 5.56	70.87 ± 6.73	71.25 ± 8.06	0.192
BMI (kg/m ²)	28.85 ± 4.96	27.68 ± 3.89	28.64 ± 4.78	0.562
BFM (%)	36.97 ± 4.52	34.57 ± 4.44	36.67 ± 4.66	0.106
FFM (%)	63.03 ± 4.52	65.43 ± 4.44	63.32 ± 4.68	0.106
Economic classification (score)	24.27 ± 7.68	23.80 ± 9.06	22.39 ± 9.5	0.680
MoCA (score)	21.57 ± 4.68	20.96 ± 3.93	21.96 ± 5.34	0.675
Depressive symptoms (score)	3.31 ± 2.85	4.15 ± 3.01	4.13 ± 2.79	0.422
Schooling (years)	7.49 ± 4.01	7.15 ± 4.50	8.74 ± 5.27	0.365
Marital status n (%)				
Single	2 (28.6)	0 (0)	5 (71.4)	0.506
Married	11 (31.4)	10 (28.6)	14 (40)	
Divorced	5 (31.3)	6 (37.5)	5 (31.3)	
Widowed	6 (19.4)	9 (29)	16 (51.6)	

Body fat mass: FFM. Body mass index. BFM. Control Group. Data presented as mean ± standard deviation: BMI. Fat-free mass: MoCA. Functional Training: PM. Montreal cognitive assessment: FT. Pilates Method: CG.

Source: Prepared by the authors of thsi study.

DISCUSSION

The present study aimed to examine the effects of two different multicomponent exercise programs on BDNF levels and physical fitness in older women. Our results demonstrated that functional training and Pilates method led to increased BDNF levels. However, the functional training program notably resulted in a more significant increase in BDNF levels and enhanced performance in functional test after training.

BDNF plays a pivotal role in synaptic modulation, neurogenesis, and neuronal survival. Notably, skeletal muscle also synthesizes BDNF, where it is critical for maintaining muscle function and adaptability [32,33]. Basic research indicated that intracellular messengers such as calcium and cyclic adenosine monophosphate (cAMP) indirectly activate the BDNF production [32]. Emerging evidence highlights BDNF's involvement in key cellular processes such as the reinforcement of neuromuscular junctions, promotion of muscle regeneration and regulation of insulin-mediated glucose uptake during exercise [32,34]. These mechanisms explain the significant increases in BDNF observed in the functional training and Pilates groups in our study. Functional training, characterized by dynamic, multi-joint exercises, likely induces greater neuromuscular activation and metabolic demands, thereby enhancing BDNF synthesis in skeletal muscle and its subsequent release into circulation [35]. Similarly, Pilates, which focuses on controlled movements and core stabilization, may stimulate BDNF production through sustained activation of targeted muscle groups and the modulation of central and peripheral pathways. Conversely, the reduction in BDNF levels observed in the control group aligns with existing evidence suggesting that physical inactivity leads to diminished BDNF production. These findings underscore the importance of well-designed and carefully prescribed exercise programs to promote optimal physiological and molecular responses, particularly those related to BDNF levels [32,34]. Although control group also received cognitive stimuli through the Health Education intervention, the frequency of

these stimuli may not have been sufficient to induce changes at the brain level, especially as this group did not receive any physical stimuli. In this context, previous studies have suggested that activities combining physical and cognitive stimuli are a more promising approach for enhancing cognitive performance in older adults than cognitive training alone [36]. Additionally, it is important to highlight that although a statistically significant decrease in BDNF levels was observed in the control group, the effect size was small ($d = -0.292$), indicating no negative impact on functional tests such as the Short Physical Performance Battery and six minute walk test. Furthermore, no adverse events were reported in this or any other group.

Netz [37] described two categories of exercise that promote improvement in cognition in older adults: (1) physical training (aerobic and strength, modulated by intensity), and (2) motor training (balance, coordination, and flexibility), modulated by the complexity of the task. Both categories were incorporated into the multicomponent exercise programs in our study, particularly in the functional training program. The motor training component in both interventions involved various combinations of movements with different levels of complexity. Consequently, the progressive increase in task complexity provided continuous cognitive stimulation, similar to the acquisition phase of motor learning, which promotes brain reorganization and plasticity in cortical and hippocampal areas [38]. In addition, exercises with high cognitive and attentional demands, such as motor coordination exercises, are known to stimulate brain plasticity [33,38]. This cognitive stimulation may have contributed to the increase in BDNF levels observed in both multicomponent programs. However, since the task complexity and cognitive stimulation were greater in the functional training program, the increase in BDNF was more pronounced in this group.

While motor training enhances neuroplasticity through neuromuscular mechanisms, physical training benefits cognition by improving cardiovascular fitness [37]. Aerobic and strength exercises have demonstrated positive effects on

Table 2. Levels of BDNF and measurements of physical fitness pre- and post-intervention of each group with intention to treat analyses.

Variables	FT (n=24)		PM (n=25)		CG (n=41)		Difference between groups (post-post comparison)		
	Mean	±SD	Mean	±SD	Mean	±SD	Group Comparison	Cohen's d (CI 95%)	p-value group*time
BDNF (pg/mL)									
Pre	1285.59	± 523.71	1291.10	± 597.15	1642.49	± 931.36	FT versus PM	-0.157 (-0.718 to 0.404)	1.000
Post	1720.97	± 647.32	1611.74	± 738.23	1350.02	± 529.99	FT versus CG	-0.644 (-1.16 to 0.129)	0.064
Pre-post comparison	0.884 (0.232 to 1.418)		0.777 (0.391 to 1.541)		-0.292 (-0.759 to 0.123)		PM versus CG	-0.425 (-0.927 to 0.078)	0.380
	<0.001*		0.001*		0.025*				
6MWT (m)									
Pre	487.88	± 66.71	467.11	± 57.74	475.67	± 55.03	FT versus PM	-1.122 (-1.724 to -0.519)	<0.001
Post	529.55	± 49.89	463.14	± 66.94	474.23	± 52.31	FT versus CG	-1.075 (-1.612 to -0.539)	<0.001
Pre-post comparison	0.491 (-0.139 to 1.01)		-0.045 (-0.593 to 0.539)		-0.018 (-0.451 to 0.426)		PM versus CG	0.19 (-0.308 to 0.689)	1.000
	0.001*		0.760		0.856				
SPPB (score)									
Pre	10.91	± 0.91	10.19	± 1.73	10.52	± 1.58	FT versus PM	-0.689 (-1.265 to -0.112)	0.050
Post	11.62	± 0.64	10.91	± 1.30	11.21	± 0.90	FT versus CG	-0.503 (-1.014 to 0.008)	0.135
Pre-post comparison	0.58 (-0.081 to 1.074)		0.333 (-0.258 to 0.858)		0.463 (0.113 – 1.002)		PM versus CG	0.281 (-0.219 to 0.781)	0.883
	0.001*		0.07		0.001*				
AGI (s)									
Pre	24.95	± 3.20	27.47	± 4.64	26.05	± 3.48	FT versus PM	0.352 (-0.213 to 0.916)	0.543
Post	24.78	± 2.88	26.10	± 4.43	25.15	± 4.31	FT versus CG	0.096 (-0.408 to 0.6)	1.000
Pre-post comparison	-0.081 (-0.694 to 0.438)		-0.382 (-1.075 to 0.067)		-0.31 (-0.763 to 0.118)		PM versus CG	-0.218 (-0.717 to 0.281)	1.000
	0.720		0.132		0.150				
HGT (kg)									
Pre	26.59	± 4.26	24.77	± 3.49	26.05	± 3.76	FT versus PM	-0.217 (-0.779 to 0.345)	1.000
Post	26.70	± 4.25	25.79	± 4.13	26.17	± 4.85	FT versus CG	-0.114 (-0.618 to 0.390)	1.000
Pre-post comparison	0.064 (-0.408 to 0.724)		0.451 (-0.058 – 1.18)		0.042 (-0.391 to 0.485)		PM versus CG	0.083 (-0.415 to 0.580)	1.000

(Continued)

(Continued)

Variables	FT (n=24)	PM (n=25)	CG (n=41)	Difference between groups (post-post comparison)
-----------	-----------	-----------	-----------	--

p-value	0.806	0.074	0.832	
---------	-------	-------	-------	--

Brain-derived Neurotrophic Factor: BDNF. Functional Training: FT. Handgrip Test: HGT. Pilates Method: PM. Short Physical Performance Battery: SPPB. Six-minute walk test: 6MWT. Agility Test: AGI. Control Group: CG.

Data are presented as mean ± standard deviation.
* p ≤ 0.05. ITT analysis performed with FT (n=24), PT (n=25) and CG (n=40).
Source: Prepared by the authors of this study.

cardiovascular fitness in older adults, particularly on endothelial function, which is one of the mechanisms by which physical exercise positively impacts cognitive function in this population [39]. The mechanisms underlying these effects are not yet fully understood, but it is hypothesized that physical exercise stimulates certain brain areas, leading to an increase in local blood flow to meet neuronal metabolic demands [40]. This increased brain activity subsequently stimulates the release of BDNF and other neurotrophins associated with brain plasticity [8]. In addition, increased blood flow also generates an increase in shear stress [40] which, in turn, triggers a cascade of cell signaling, including the release of BDNF from platelets and vascular endothelial cells [8].

Interventions incorporating strength training for durations between 6 and 12 weeks, as well as combined aerobic and strength training lasting between 8 and 24 weeks, have been shown to positively affect peripheral blood BDNF concentrations in older adults [11]. In the current study, functional training led to a more pronounced increase in BDNF levels compared to Pilates. This can be attributed to the functional training program's incorporation of various dual-task activities alongside substantial aerobic stimuli, which facilitate greater cardiovascular benefits, as evidenced by the improvements in the six-minute walk test observed in this group. Improvements in aerobic conditioning have been associated with increases in BDNF levels in older women who participated other multicomponent exercise programs [41]. Aerobic exercise also benefits brain structure and function, such as increased blood flow and brain volume, which are factors related to higher levels of BDNF [42].

Functional training with different physical stimuli combined with cognitive-motor dual-task is a new method compared to traditional Pilates. While previous studies have reported benefits for physical and cognitive functions in older adults in functional exercise programs [23,27,35], this is the first study to demonstrate the effect of this type of exercise on BDNF levels in this population. Our findings indicate that a functional exercise program involving tasks with varying levels of complexity has a positive impact on BDNF levels and physical function, as measured by the six minute walk test and Short Physical Performance Battery. These results are significant for clinical practice, as they suggest that functional exercises can also produce systemic effects. Future research should explore different intensities and frequencies of multicomponent exercises on physical and cognitive variables and determine whether there is a minimum frequency required to achieve the benefits of physical exercise.

This study has several limitations that should be acknowledged. One limitation is the use of a convenience sampling method, which may not accurately represent the broader population and thus limits the generalizability of the findings. Additionally, the non-randomized nature of the sample introduces the possibility of unmeasured confounding factors beyond those accounted for as covariates that could have

influenced the results. However, the similar baseline characteristics among the women in the three groups likely helped mitigate potential confounding effects. Moreover, as the sample exclusively comprised physically independent older women, the findings may not be applicable to older men or individuals with varying levels of functional status. Another limitation of this study is the lack of assessment or control of participants' protein intake, overall dietary consumption, and medication type or dosage, all of which could have influenced the results. Future randomized controlled trials are needed to confirm and expand upon the results observed in this study. These trials should include both men and women, account for dietary intake, and measure additional biological variables associated with cognitive function to provide a more comprehensive understanding of the observed outcomes.

According to the guidelines for reporting Sex and Gender Equity in Research (SAGER), it is important to acknowledge that, despite efforts to recruit men, most participants in this study were women [43]. Consequently, only women were included as participants, as recruiting men for each group proved challenging. Furthermore, it is important to highlight the persistent gap in the representation of women in studies involving human subjects, underscoring the significance of this study in addressing this underrepresentation.

Despite the limitations, the exercise programs included in this study demonstrate high applicability to clinical practice within the context of community-dwelling older adults. Furthermore, this is the first study to analyze the biological effects of the Functional Exercise Circuit protocol on BDNF levels in older women. Future studies are necessary to determine whether these effects are also observed in older men and in older adults with other functional status.

CONCLUSIONS

In conclusion, while both multicomponent exercises increased BDNF levels over a 12-week intervention with a large effect size, functional training yielded superior results compared to the Pilates method, possibly mediated by improvement in physical function. Additionally, although an increase in physical function was observed in the control group in the Short Physical Performance Battery, individuals exhibited a decrease in BDNF levels with a small effect size. The control group received an educational program without an exercise intervention. These findings highlight the significant impact of exercise programs on BDNF levels and other clinical variables in older adults. Future studies should explore varying intensities and frequencies of multicomponent exercise on both physical and cognitive outcomes and determine if there is a minimum frequency required to achieve the benefits of physical exercise.

Contributor roles MI, DCT, BPG and WSL: design of the work; acquisition and analysis of the data. CP and FCS: RCPF extraction and analysis with polymerase chain reaction. RCPF: blood biomarkers analysis and clinical evaluation of the individuals. ANCS, WSL, and

VSP: interpretation of the results. MI, WSL, VSP and DCT: drafting the manuscript and reviewing it critically for important intellectual content. WSL, VSP and DCT: final review of the manuscript.

Acknowledgments The authors acknowledge the professionals from the University Hospital. Londrina State University. Brazil. patients. and volunteers from the community organizations from Londrina for their collaboration.

Competing interests The authors declare no conflict of interest.

Funding This study was financed in part by the PROEXT- Programa de Extensão Universitária - Ministério da Educação – Brazil; Coordenação de Aperfeiçoamento de Pessoal de Nível Superior (CAPES) - Brazil - Finance Code 001; and Fundação Araucária – Apoio ao Desenvolvimento Científico e Tecnológico do Paraná – Brazil.

Language of submission English.

Peer review and provenance Not commissioned. Externally peer-reviewed by two reviewers. Internally reviewed by the journal's statistical editor. The peer review process was entirely done in a double anonymous modality.

REFERENCES

- Urtamo A, Jyväkorpi SK, Strandberg TE. Definitions of successful ageing: A brief review of A multidimensional concept. *Acta Biomed*. 2019;90: 359–363. <https://doi.org/10.23750/abm.v90i2.8376>
- Galloza J, Castillo B, Micheo W. Benefits of Exercise in the Older Population. *Phys Med Rehabil Clin N Am*. 2017;28: 659–669. <https://doi.org/10.1016/j.pmr.2017.06.001>
- Aartolahti E, Lönnroos E, Hartikainen S, Häkkinen A. Long-term strength and balance training in prevention of decline in muscle strength and mobility in older adults. *Aging Clin Exp Res*. 2020;32: 59–66. <https://doi.org/10.1007/s40520-019-01155-0>
- Jiménez-García J, Martínez-Amat A, De la Torre-Cruz M, Fábrega-Cuadros R, Cruz-Díaz D, Aibar-Almazán A, et al. Suspension Training HIIT Improves Gait Speed, Strength and Quality of Life in Older Adults. *Int J Sports Med*. 2019;40: 116–124. <https://doi.org/10.1055/a-0787-1548>
- Quigley A, MacKay-Lyons M, Eskes G. Effects of Exercise on Cognitive Performance in Older Adults: A Narrative Review of the Evidence, Possible Biological Mechanisms, and Recommendations for Exercise Prescription. *J Aging Res*. 2020;2020: 1–15. <https://doi.org/10.1155/2020/1407896>
- Karege F, Perret G, Bondolfi G, Schwald M, Bertschy G, Aubry JM. Decreased serum brain-derived neurotrophic factor levels in major depressed patients. *Psychiatry Res*. 2002;109: 143–8. [https://doi.org/10.1016/s0165-1781\(02\)00005-7](https://doi.org/10.1016/s0165-1781(02)00005-7)
- Shimada H, Makizako H, Doi T, Yoshida D, Tsutsumimoto K, Anan Y, et al. A large, cross-sectional observational study of serum BDNF, cognitive function, and mild cognitive impairment in the elderly. *Front Aging Neurosci*. 2014;6: 69. <https://doi.org/10.3389/fnagi.2014.00069>
- Walsh JJ, Tschakovsky ME. Exercise and circulating BDNF: Mechanisms of release and implications for the design of exercise interventions. *Appl Physiol Nutr Metab*. 2018;43: 1095–1104. <https://doi.org/10.1139/apnm-2018-0192>
- Bettio L, Thacker JS, Hutton C, Christie BR. Modulation of synaptic plasticity by exercise. *Int Rev Neurobiol*. 2019;147: 295–322. <https://doi.org/10.1016/bs.irm.2019.07.002>
- Dinoff A, Herrmann N, Swardfager W, Liu CS, Sherman C, Chan S, et al. The Effect of Exercise Training on Resting Concentrations of Peripheral Brain-Derived Neurotrophic Factor (BDNF): A Meta-Analysis. *PLoS One*. 2016;11: e0163037. <https://doi.org/10.1371/journal.pone.0163037>
- Marinus N, Hansen D, Feys P, Meesen R, Timmermans A, Spildooren J. The Impact of Different Types of Exercise Training on Peripheral Blood Brain-Derived Neurotrophic Factor Concentrations in Older Adults: A Meta-Analysis. *Sports Med*. 2019;49: 1529–1546. <https://doi.org/10.1007/s40279-019-01148-z>
- Barha CK, Davis JC, Falck RS, Nagamatsu LS, Liu-Ambrose T. Sex differences in exercise efficacy to improve cognition: A systematic review and meta-analysis of randomized controlled trials in older humans. *Front Neuroendocrinol*. 2017;46: 71–85. <https://doi.org/10.1016/j.yfrne.2017.04.002>
- Coelho FG de M, Gobbi S, Andreatto CAA, Corazza DI, Pedrosa RV, Santos-Galduróz RF. Physical exercise modulates peripheral levels of brain-derived neurotrophic factor (BDNF): A systematic review of experimental studies in the elderly. *Arch Gerontol Geriatr*. 2013;56: 10–5. <https://doi.org/10.1016/j.archger.2012.06.003>
- de Assis GG, de Almondes KM. Exercise-dependent BDNF as A Modulatory Factor for the Executive Processing of Individuals in Course of Cognitive Decline. A Systematic Review. *Front Psychol*. 2017;8: 584. <https://doi.org/10.3389/fpsyg.2017.00584>
- Vaughan S, Wallis M, Polit D, Steele M, Shum D, Morris N. The effects of multimodal exercise on cognitive and physical functioning and brain-derived neurotrophic factor in older women: A randomised controlled trial. *Age Ageing*. 2014;43: 623–9. <https://doi.org/10.1093/ageing/afu010>
- Nascimento CMC, Pereira JR, de Andrade LP, Garuffi M, Talib LL, Forlenza OV, et al. Physical exercise in MCI elderly promotes reduction of pro-inflammatory cytokines and improvements on cognition and BDNF peripheral levels. *Curr Alzheimer Res*. 2014;11: 799–805. <https://doi.org/10.2174/156720501108140910122849>
- Suzuki T, Shimada H, Makizako H, Doi T, Yoshida D, Ito K, et al. A Randomized Controlled Trial of Multicomponent Exercise in Older Adults with Mild Cognitive Impairment. *PLoS ONE*. 2013;8: e61483. <https://doi.org/10.1371/journal.pone.0061483>
- Loyola WS, Camillo CA, Torres CV, Probst VS. Effects of an exercise model based on functional circuits in an older population with different levels of social participation. *Geriatr Gerontol Int*. 2018;18: 216–223. <https://doi.org/10.1111/ggi.13167>
- Rassam P, Pazzianotto-Forti EM, Matsumura U, Orchanian-Cheff A, Aliabadi S, Kulkarni M, et al. Impact of cognitive capacity on physical performance in chronic obstructive

- pulmonary disease patients: A scoping review. *Chron Respir Dis*. 2023;20: 14799731231163874. <https://doi.org/10.1177/14799731231163874>
20. Plummer P, Eskes G. Measuring treatment effects on dual-task performance: a framework for research and clinical practice. *Front Hum Neurosci*. 2015;9. <https://doi.org/10.3389/fnhum.2015.00225>
21. Vaughan S, Wallis M, Polit D, Steele M, Shum D, Morris N. The effects of multimodal exercise on cognitive and physical functioning and brain-derived neurotrophic factor in older women: A randomised controlled trial. *Age Ageing*. 2014;43: 623–9. <https://doi.org/10.1093/ageing/afu010>
22. Nascimento CMC, Pereira JR, de Andrade LP, Garuffi M, Talib LL, Forlenza OV, et al. Physical exercise in MCI elderly promotes reduction of pro-inflammatory cytokines and improvements on cognition and BDNF peripheral levels. *Curr Alzheimer Res*. 2014;11: 799–805. <https://doi.org/10.2174/156720501108140910122849>
23. da Silva EM, Sepúlveda-Loyola W, Martins da Silva J, Castilho dos Santos G, Pereira C. Comparison between simple and dual tasks, cognitive capacity, and postural balance in older people who participated in 3 types of exercise. *Fisioterapia*. 2020;42: 33–38. <https://doi.org/10.1016/j.ft.2019.10.002>
24. World Medical Association declaration of Helsinki: Ethical principles for medical research involving human subjects. *JAMA American Medical Association*. 2013; 2191–2194. <https://doi.org/10.1001/jama.2013.281053>
25. Memória CM, Yassuda MS, Nakano EY, Forlenza OV. Brief screening for mild cognitive impairment: validation of the Brazilian version of the Montreal cognitive assessment. *Int J Geriatr Psychiatry*. 2013;28: 34–40. <https://doi.org/10.1002/gps.3787>
26. Almeida OP, Almeida SA. Reliability of the Brazilian version of the geriatric depression scale (GDS) short form. *Arq Neuropsiquiatr*. 1999;57: 421–426. <https://doi.org/10.1590/S0004-282X1999000300013>
27. Loyola WS, Camillo CA, Torres CV, Probst VS. Effects of an exercise model based on functional circuits in an older population with different levels of social participation. *Geriatr Gerontol Int*. 2018;18: 216–223. <https://doi.org/10.1111/ggi.13167>
28. Foster C, Florhaug JA, Franklin J, Gottschall L, Hrovatin LA, Parker S, et al. A New Approach to Monitoring Exercise Training. *J Strength Cond Res*. 2001;15: 109–115. <https://doi.org/10.1519/00124278-200102000-00019>
29. Benedetti T, Manta S, Gomez L, Rech C. Logical model of a behavior change program for community intervention – Active Life Improving Health – VAMOS. *Rev Bras Ativ Fís Saúde*. 2017;22: 309–313. <https://doi.org/10.12820/rbafs.v.22n3p309-313>
30. de Melo MB, Daldegan-Bueno D, Menezes Oliveira MG, de Souza AL. Beyond ANOVA and MANOVA for repeated measures: Advantages of generalized estimated equations and generalized linear mixed models and its use in neuroscience research. *Eur J of Neuroscience*. 2022;56: 6089–6098. <https://onlinelibrary.wiley.com/toc/14609568/56/12> <https://doi.org/10.1111/ejn.15858>
31. Cohen J. . 2nd Edition. *Statistical Power Analysis for the Behavioral Sciences*. Routledge; 1988. <https://doi.org/10.4324/9780203771587>
32. Rentería I, García-Suárez PC, Fry AC, Moncada-Jiménez J, Machado-Parra JP, Antunes BM, et al. The Molecular Effects of BDNF Synthesis on Skeletal Muscle: A Mini-Review. *Front Physiol*. 2022;13. <https://doi.org/10.3389/fphys.2022.934714>
33. Damirchi A, Hosseini F, Babaei P. Mental Training Enhances Cognitive Function and BDNF More Than Either Physical or Combined Training in Elderly Women With MCI: A Small-Scale Study. *Am J Alzheimers Dis Other Dement*. 2018;33: 20–29. <https://doi.org/10.1177/1533317517727068>
34. Cardoso S V, Fernandes SR, Tomás MT. Therapeutic importance of exercise in neuroplasticity in adults with neurological pathology: systematic review. *Int J Exerc Sci*. 2024;17: 1105–1119. <https://doi.org/10.70252/VZWF7949>
35. Sepúlveda-Loyola W, Tricanico Maciel RP, De Castro Teixeira D, Araya-Quintanilla F, Da Silva Junior RA, Álvarez-Bustos A, et al. Circuito de ejercicio funcional con tareas duales sobre variables clínicas relacionados con la sarcopenia. *Retos*. 2025;63: 459–471. <https://doi.org/10.47197/retos.v63.110528>
36. Theill N, Schumacher V, Adelsberger R, Martin M, Jäncke L. Effects of simultaneously performed cognitive and physical training in older adults. *BMC Neurosci*. 2013;14. <https://doi.org/10.1186/1471-2202-14-103>
37. Netz Y. Is There A Preferred Mode of Exercise for Cognition Enhancement in Older Age?—A Narrative Review. *Front Med (Lausanne)*. 2019;6: 57. <https://doi.org/10.3389/fmed.2019.00057>
38. Voelcker-Rehage C, Niemann C. Structural and functional brain changes related to different types of physical activity across the life span. *Neurosci Biobehav Rev*. 2013;37: 2268–95. <https://doi.org/10.1016/j.neubiorev.2013.01.028>
39. Kennedy G, Hardman RJ, Macpherson H, Scholey AB, Pipingas A. How Does Exercise Reduce the Rate of Age-Associated Cognitive Decline? A Review of Potential Mechanisms. *JAD*. 2016;55: 1–18. <https://doi.org/10.3233/JAD-160665>
40. Bolduc V, Thorin-Trescases N, Thorin E. Endothelium-dependent control of cerebrovascular functions through age: exercise for healthy cerebrovascular aging. *Am J Physiol Heart Circ Physiol*. 2013;305: H620–33. <https://doi.org/10.1152/ajpheart.00624.2012>
41. Vedovelli K, Giacobbo BL, Corrêa MS, Wieck A, Argimon II de L, Bromberg E. Multimodal physical activity increases brain-derived neurotrophic factor levels and improves cognition in institutionalized older women. *Geroscience*. 2017;39: 407–417. <https://doi.org/10.1007/s11357-017-9987-5>
42. Erickson KI, Voss MW, Prakash RS, Basak C, Szabo A, Chaddock L, et al. Exercise training increases size of hippocampus and improves memory. *Proc Natl Acad Sci U S A*. 2011;108: 3017–22. <https://doi.org/10.1073/pnas.1015950108>

43. Heidari S, Babor TF, De Castro P, Tort S, Curno M. Sex and Gender Equity in Research: rationale for the SAGER guidelines and recommended use. *Res Integr Peer Rev.* 2016;1. <https://doi.org/10.1186/s41073-016-0007-6>

Efectos de nuevos programas de ejercicio multicomponente sobre los niveles del factor neurotrófico derivado del cerebro y la aptitud física en mujeres mayores

RESUMEN

INTRODUCCIÓN Los programas de ejercicio multicomponente han demostrado beneficios tanto para la función cognitiva como para la física. Sin embargo, sus efectos sobre los niveles del factor neurotrófico derivado del cerebro (BDNF) siguen siendo inconsistentes, particularmente en protocolos que incorporan ejercicios funcionales. Este estudio tuvo como objetivo evaluar el impacto de dos protocolos distintos de ejercicio multicomponente sobre los niveles de BDNF y la condición física en mujeres mayores.

MÉTODOS Noventa mujeres mayores físicamente activas y residentes en la comunidad (70.4 ± 7.2 años) fueron asignadas a uno de tres grupos: (1) Programa Multicomponente 1: Entrenamiento funcional basado en Circuito; (2) Programa Multicomponente 2: Método Pilates; y (3) Grupo Control, que recibió únicamente educación para la salud. Ambos programas multicomponentes se llevaron a cabo durante un período de 12 semanas, con sesiones de 50 minutos, tres veces por semana. El grupo control participó en una intervención de educación para la salud de 12 semanas con sesiones de 90 minutos una vez por semana. Fueron evaluados los niveles de BDNF, la batería corta de desempeño físico, pruebas de agilidad, la prueba de caminata de seis minutos y la fuerza de agarre manual.

RESULTADOS Los niveles de BDNF aumentaron significativamente tanto en el grupo de entrenamiento funcional ($p < 0.001$) como en el grupo Pilates ($p = 0.005$), con un aumento más pronunciado en el entrenamiento funcional. La distancia recorrida en la prueba de caminata de seis minutos aumentó significativamente en el grupo de entrenamiento funcional ($p = 0.001$) comparado con los grupos de Pilates ($p < 0.001$) y control ($p < 0.001$).

CONCLUSIONES Ambos programas de ejercicio multicomponente aumentaron los niveles de BDNF tras 12 semanas de intervención. Sin embargo, el entrenamiento funcional produjo resultados superiores en comparación con el método Pilates, posiblemente debido a mejoras en la función física.



This work is licensed under a Creative Commons Attribution 4.0 International License.